

# SPARTAN PERIPHERAL DEVICES

## RETROFIT SELECTION GUIDE

Retrofit requirement:

When retrofitting a Spartan actuator onto an existing valve body the following information will be required.

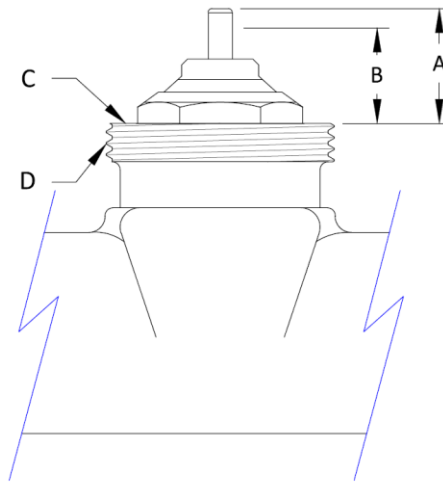
Stem height, dimension "A"

Stem height when fully retracted "B"

The above dimensions are taken from position "C". That is where the actuator is sitting onto.

Try to get the thread information. It is usually a Metric thread. Use Table1 to help you

The travel is value "A" minus "B".



Nominal	Measure mm	Measured inches	Nominal Inches
28mm x 1.5	27.45	1.081	1-1/16
30mm x 1.5	29.70	1.170	1-1/8
40mm x 1.5	39.80	1.567	1-9/16

Table 1