



V245 Series 2 Way Valve Body with Direct Solder Connections

Spartan Peripheral Devices 2 way V245 series globe control valve bodies, with direct solder connections, are available in 1/2" and 3/4" sizes.

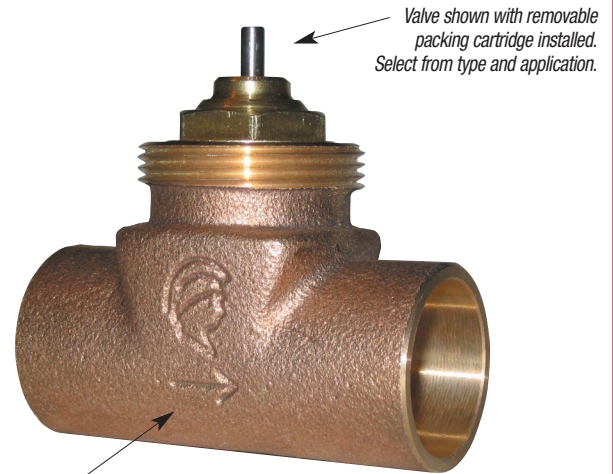
They are designed for hot or chilled water and 50% glycol with a standard EP cartridge, or for high differential pressure applications with a balanced EB cartridge and for low pressure steam applications up to 15PSI with a steam rated EV cartridge. See Spartan cartridges data sheet.

They are compatible and interchangeable with the complete line of Spartan control valve actuators (wireless, electric, electronic, pneumatic and thermostatic). See Spartan actuators data sheet.

The commercial application globe valve bodies utilize low zinc anti dezincification bronze and are guaranteed for the life of the building.

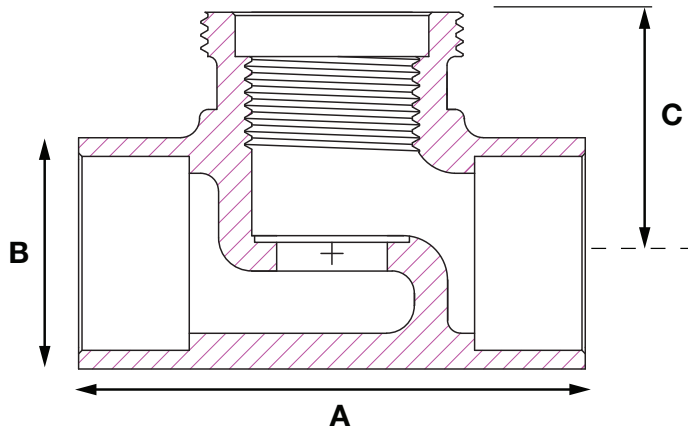
General Specifications

Body Material	Low zinc bronze, alloy C84400
Pressure Rating	ANSI 250 (400 PSI at 32°F to 150°F, 250 PSI at 250° F) PN25
Max. Test Pressure	1200 PSI (81 bar)
Max. ΔPressure	50 PSI (3.5 bar) can be exceeded but with possible water noise
Valve Stem	"Mirror – maker" burnished stainless steel stems
Rangeability	100:1
Stem Travel	5/32" (4mm)
Stem Position	UP = valve open (default position), DOWN = valve closed



The valve body must be installed in the direction indicated on the valve body cavity.

Dimensions



Select the required valve size:
V245-12S for 1/2" size. V245-34S for 3/4" size.
Select CV from cartridge type.

Dimensions

	A	B	C
1/2" Valve (16mm)	2.24 (56,90)	1.60 (40,64)	1.09 (27,69)
3/4" Valve (22mm)	2.29 (58,17)	1.60 (40,64)	1.09 (27,69)

Weight: 1/2" - 7.8oz (220g)
3/4" - 8.1oz (230g)

Installation and Flow Direction

IMPORTANT:

To avoid excessive heat damage the packing cartridge must be removed (use packing wrench AV08) before soldering.

When installing it is essential that the flow follows the arrow that is embedded into the valve body casting. The packing, plunger and cartridge can be easily replaced by using the AV08 Packing Wrench.

HOW TO ORDER

- Choose your valve body.
 - Choose an internal cartridge according to your application and CV. See *Spartan cartridges data sheet*.
 - Choose an actuator.
- For a complete overview, see our Zone Valve Selection Guide.



Actuator Type - see Data Sheets

Cv Value

Cartridge Type - see Data Sheet

S = Direct Solder Ports

Valve Size - 12 = 1/2", 34 = 3/4"

Valve Body Type - VE245 = direct solder port in, direct solder port out

Valve Assembly Type - Select E for Electric, P for Pneumatic, or T for Thermostatic