

PT Series

Operation

Pilot NAMUR mounted solenoid valves direct mount to the side of pneumatic process actuators and are available with general service or explosion proof coils. Two o-rings extend from the body and compress against the actuator to make a leak free seal. The coil receives the incoming power supply which then switches an internal patented piston air port assembly, to allow the actuator to rotate 90°.



Features

- Poppet valve is pilot operated with continuous duty coil
- 24, 120, 220 VAC / VDC coils are available
- NEMA 4 enclosure is weatherproof
- Stainless steel armature is corrosion resistant
- NPT 1/4" inlet port with 1/8" outlet ports with brass mufflers
- Patented high cycle internal porting technology
- Exhaust feedback feature prevents intake of external air into the actuator chamber.
- Temperature range is -20°F to +125°F
- 4-way design is suited for double acting or spring return actuators



Technical

Coil Duty Cycle is 100%

High Air Flow (CV 1.1) Fast Acting Response

Operating Media: Air or Nitrogen

Weatherproof NEMA 1, 2, 3, 3S, 4 and 4X

Pressure Range 35 psig to 120 psig

Part	Material
Housing	Polyamide 50% Glass Filled
Armature	Stainless Steel
Main Seal Element	Elastomer
NPT Inlet Porting	Zinc Plated Steel
Drive Piston Assembly	Stainless Steel Springs
Bolts	Stainless Steel

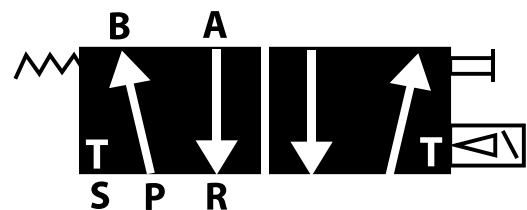
LED Indication

When power is present on a general service coil it is indicated by a LED light. The red LED light is pre-wired and long lasting to give years of trouble free indication.



Manual Override

The solenoid offers a maintained manual override as standard. To activate the manual override turn the red button 180° opposite from current location.



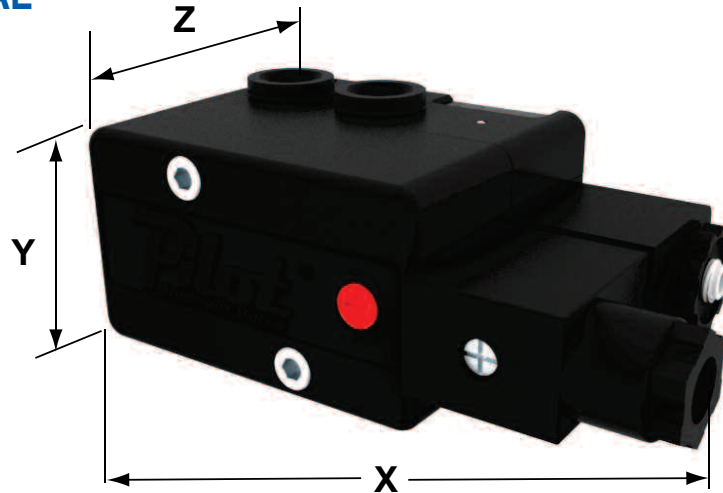
Optional Speed Controls

Speed control mufflers are constructed of nickel plated aluminum and fitted with an external flow adjustment screw. The adjustment screw moves the aero-dynamically shaped bullet head to meter the air flow. Flow can be accurately varied with the bullet type head from closed to full flow with the final position being locked by the locking nut. This speed control muffler is tamper proof and can't be blown out under high pressure.



PT Series

DIMENSIONAL



GENERAL SERVICE (CE, CSA, UL Approved Coil)

Voltages	Assembly Number	Rating	Class Coil	Cv	Port Size	Dimensions (inch)		
						X	Y	Z
24 VAC	PT2A-4	6.9 VA	F	1.1	1/4" Inlet	4.96	2.47	2.09
24 VDC	PT4D-4	4.8 W	F	1.1	1/4" Inlet	4.96	2.47	2.09
120 VAC	PT6A-4	6.9 VA	F	1.1	1/4" Inlet	4.96	2.47	2.09
220 VAC	PT8A-4	6.9 VA	F	1.1	1/4" Inlet	4.96	2.47	2.09

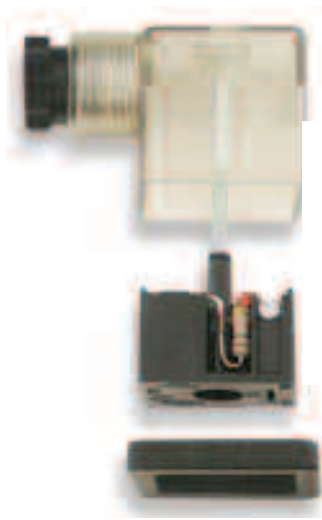
EXPLOSION PROOF SERVICE (CSA and FM Approved Coil For Hazardous Locations)

Voltages	Assembly Number	Rating	Class Coil	Cv	Port Size	Dimensions (inch)		
						X	Y	Z
24 VDC	PT4D-7	4.8 W	H	1.1	1/4" Inlet	4.96	2.47	2.09
120 VAC	PT6A-7	6.9 VA	H	1.1	1/4" Inlet	4.96	2.47	2.09

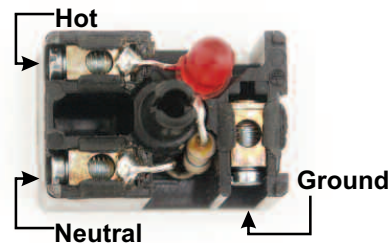
ELECTRICAL

NOTE: Not Polarity Sensitive Between Neutral and Hot

GENERAL SERVICE COIL



Top View



EXPLOSION PROOF COIL

